

## Test Report

No. EC407050905

Date: Oct 16 2007

Page 1 of 3

LEADER PRINTED CIRCUIT BOARDS LTD  
FLAT 2, 3/F.,  
SUN CHEONG IND. BLDG.,  
2-4 CHEUNG YEE ST.,  
CHEUNG SHA WAN,  
HONG KONG

The following sample was submitted and identified on behalf of the client as :  
IMMERSION TIN PCB

SGS Job No. : 1120696  
Date of Sample(s) Received : OCT 03 2007  
Testing Period : OCT 03 - 10 2007

Test Requested/  
Test Method : - In accordance with RoHS Directive 2002/95/EC, and its amendment directives.  
- With reference to EPA Method 3051A/ 3052 for Cadmium, Lead and Mercury contents. Analysis was performed by ICP.  
- With reference to EPA Method 3060A & 7196A for Hexavalent Chromium content. Analysis was performed by colorimetric method (UV-VIS).  
- With reference to EPA Method 3550C/ 3540C for PBBs/ PBDEs contents. Analysis was performed by GC-MS.

Test Results : Please refer to next page.

Conclusion : - Based on the performed tests on submitted sample, the results comply with the RoHS Directive 2002/95/EC and its subsequent amendments.

Signed for and on behalf of  
SGS Hong Kong Ltd.



Ho Ka Ting Family  
Senior Laboratory Executive



This document is issued by the Company subject to its General Conditions of Service printed overleaf or available on request and accessible at [www.sgs.com](http://www.sgs.com). Attention is drawn to the limitations of liability, indemnification and jurisdictional issues defined therein. Unless otherwise stated: (a) the results shown in this document refer only to the sample(s) tested and (b) such sample(s) are retained for 30 days only. This document cannot be reproduced except in full, without prior approval of the Company. Any unauthorized alteration, forgery or falsification of the content or appearance of this report is unlawful and offenders may be prosecuted to the fullest extent of the law.

H15663609

## Test Report

No. EC407050905

Date: Oct 16 2007

Page 2 of 3

### Test Results:

Test results by chemical method (Unit : mg/kg)

	<u>1</u>	<u>MDL</u>	<u>Limit</u>
Cadmium (Cd)	n.d.	2	100
Lead (Pb)	5	2	1000
Mercury (Hg)	n.d.	2	1000
Hexavalent Chromium (CrVI) by colorimetric method	n.d.	2	1000
Sum of PBBs (Mono to Deca)	n.d.	-	1000
Monobromobiphenyl	n.d.	5	
Dibromobiphenyl	n.d.	5	
Tribromobiphenyl	n.d.	5	
Tetrabromobiphenyl	n.d.	5	
Pentabromobiphenyl	n.d.	5	
Hexabromobiphenyl	n.d.	5	
Heptabromobiphenyl	n.d.	5	
Octabromobiphenyl	n.d.	5	
Nonabromobiphenyl	n.d.	5	
Decabromobiphenyl	n.d.	5	
Sum of PBDEs (Note 4)	n.d.	-	1000
Sum of PBDEs (Mono to Deca)	n.d.	-	
Monobromodiphenyl ether	n.d.	5	
Dibromodiphenyl ether	n.d.	5	
Tribromodiphenyl ether	n.d.	5	
Tetrabromodiphenyl ether	n.d.	5	
Pentabromodiphenyl ether	n.d.	5	
Hexabromodiphenyl ether	n.d.	5	
Heptabromodiphenyl ether	n.d.	5	
Octabromodiphenyl ether	n.d.	5	
Nonabromodiphenyl ether	n.d.	5	
Decabromodiphenyl ether	n.d.	5	

### Note :

- (1) mg/kg = ppm
- (2) MDL = Method Detection Limit
- (3) n.d. = Not Detected
- (4) Sum of Mono to NonaBDE & according to 2005/717/EC DecaBDE is exempt.
- (5) - = Not Regulated
- (6) -- = Not Conducted

### Sample Description

1 Translucent Glass.Fibre w/ White and Dark Brown Printing w/ Silvery Metal

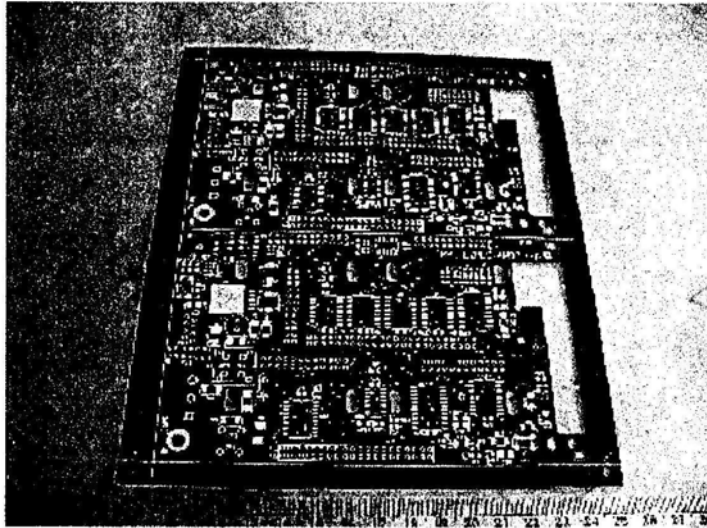


This document is issued by the Company subject to its General Conditions of Service printed overleaf or available on request and accessible at [www.sgs.com](http://www.sgs.com). Attention is drawn to the limitations of liability, indemnification and jurisdictional issues defined therein. Unless otherwise stated: (a) the results shown in this document refer only to the sample(s) tested and (b) such sample(s) are retained for 30 days only. This document cannot be reproduced except in full, without prior approval of the Company. Any unauthorized alteration, forgery or falsification of the content or appearance of this report is unlawful and offenders may be prosecuted to the fullest extent of the law.

H15663610

Sample photo:

## EC407050905 (Sample 1)



SGS authenticate the photo on original report only

\*\*\* End Of Report \*\*\*



This document is issued by the Company subject to its General Conditions of Service printed overleaf or available on request and accessible at [www.sgs.com](http://www.sgs.com). Attention is drawn to the limitations of liability, indemnification and jurisdictional issues defined therein. Unless otherwise stated: (a) the results shown in this document refer only to the sample(s) tested and (b) such sample(s) are retained for 30 days only. This document cannot be reproduced except in full, without prior approval of the Company. Any unauthorized alteration, forgery or falsification of the content or appearance of this report is unlawful and offenders may be prosecuted to the fullest extent of the law.

H15663611